

DragonWally DW0

Camera Mezzanine Expansion Board for
the DragonBoard 410c SBC

DragonWally

Rapid prototyping and evaluation of embedded computer vision with the DragonBoard 410c SBC

The **DragonWally DW0 Mezzanine** with two **OV5645** (OmniVision) camera modules enables rapid prototyping and development of computer vision applications using the **DragonBoard410c** SBC. The direct interfacing of cameras through **MIPI-CSI** signals allows for a robust implementation of embedded computer vision processing, eliminating the need of external cameras (using USB ou Ethernet).

The mezzanine board has an additional USB port, equipped with overcurrent protection (500mA), ESD protection of the D+/D- signals and power On/Off control through GPIO port of the **DragonBoard 410c**.

These features make this additional USB port safer and more controllable when interfacing external devices in harsh environments.

FEATURES

- Conforms to the 96Boards Consumer Edition specification
- Supports **DragonBoard 410c**
- Direct **MIPI-CSI** camera interfacing
- Supports two 5 Megapixel cameras
- Supports Linux (**Linaro Debian**) OS
- Supports **OpenCV** e **Python** for rapid computer vision application development

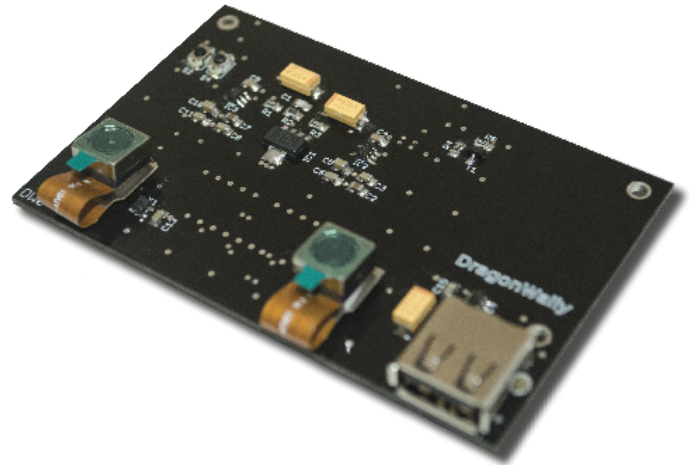
ORDERING INFORMATION

DragonWally DW0 Mezzanine

- Part Number : DW0 CAMERA MEZZ DUAL

Inquires and orders can be made by email :

- EMAIL : sales@dragonwally.com



INCLUDED ITEMS

- **DragonWally DW0** Mezzanine board
- Two **OV5645** camera modules

CUSTOM PRODUCT DESIGN SERVICES

We offer customization services of this reference design for new applications meeting additional client requirements. Our engineering team has solid experience with hardware and software design for the **Snapdragon 410E** platform.

CONTACT

- WEBSITE : www.dragonwally.com
- EMAIL : sales@dragonwally.com